



DATTA MEGHE
INSTITUTE OF HIGHER
EDUCATION & RESEARCH
(DEEMED TO BE UNIVERSITY)

LEARN. LEAD.

**ITS ALL HERE
EVERY DREAM, EVERY GOAL.**

A Focus On Holistic Nursing That
Takes Into Account Of Physical
Emotional And Spiritual
Needs Of Patients



SHALINITAI MEGHE COLLEGE OF NURSING, Wardha

A constituent unit of DMIHER (DU)



NAAC **A++**
ACCREDITED WITH CGPA (3.78)



RANK 24
Dental College

RANK 42
University in India



Awarded
Category I
University by UGC

3rd
IN INDIA
GOOD HEALTH AND
WELLBEING
SDG 3

15th
IN THE WORLD
GOOD HEALTH AND
WELLBEING
SDG 3

THE **IMPACT**
RANKINGS
2024

ABOUT UNIVERSITY

DMIHER is a multidisciplinary university located in Sawangi Meghe, Wardha, which is 80 kms from Nagpur, offers a very conducive environment for high-quality education. Driven by the purpose of Learn and Lead, the university believes in inspiring the students for a meaningful, impactful future where they contribute to the society through professional accomplishment.

Our Hon'ble Chancellor's Message

“At DMIHER we have a strong focus on Developing well-balanced professionals capable of dealing with the challenges of a fast-changing world. Students are gently, but constantly encouraged to reach higher, to learn and lead”



UNIVERSITY HIGHLIGHTS



Category-I Deemed to be University under UGC for Categorization of Universities for Grant of Graded Autonomy Regulations 2018



'A++' Accreditation (Fourth Cycle) by 'NAAC' in 2023



Ranked 42nd among universities in India by NIRF 2024



15 constituent colleges



Competency and outcome-based Education in all academic programs



50+ collaborations with top institutions across the globe



Research with 10,000+ publications in last 3 years and 97 patents



1250+ copyrights reserved



Faculties with Global University Pedigree



Simulation based learning and access to industry project and social immersion Projects



50000+ Alumni

ABOUT SMCON, WARDHA

- » **Shalinitai Meghe College of Nursing, Wardha**, proudly situated within the tranquil campus of DMIHER University, was inaugurated in 2023 and has quickly become one of the top nursing colleges in Wardha. With an annual intake of 100 students for our B.Sc. Nursing course, we aim to cultivate a learning atmosphere inspired by the care and devotion exemplified by figures like Mahatma Gandhi and Acharya Vinoba Bhave. Our college benefits from an exclusive facility within the campus, along with access to the multispecialty and super-specialty services offered by our parent hospital, Shalinitai Meghe Super-Specialty Hospital, Wardha.

VISION

- » To train students to heal individuals with care and love.

MISSION

- » To prepare students who can assume personal responsibility and can deliver health services to group of individuals.

KEY OFFICIALS



Dr. Ranjana Sharma
PRINCIPAL



Mrs. Savita Pohekar
VICE-PRINCIPAL



Dr. Pooja Kasturkar
DEAN ACADEMICS

WHY CHOOSE SMCON, WARDHA?

» Comprehensive Community Health Care Program (CCHCP)

Practical exposure developed through combined community health services effectively boosts nursing competency in real healthcare settings.

» Advanced Skill Lab & OSCE Training for Clinical Excellence

State-of-the-art technological laboratories and OSCE training enable structured and experiential clinical education, thereby enabling confident and competent nursing practice.

» Scholarships and Financial Aid

Need-based and merit-based scholarships facilitate the acquisition of nursing education and reward academic excellence at SMCON.

» Innovation & Research

Focus Evidence-based education encourages innovation in healthcare development, patient care, and nursing practice.

» Clinical Training and Expert Mentorship

Professional training and mentorship in the hospital improve clinical competency to promote improved patient care.

» Career Development and Paid Internships

Work training and paid internships improve career readiness in healthcare.

» Hands-on Clinical Experience

Practical training in a 1500+ bedded hospital provides extensive exposure to real-world healthcare settings.

CAMPUS FACILITIES



Maternal Child Health Lab



Pre-Clinical Lab



School of Experiential Learning



OSCE lab



Digital Lab



Simulation Lab



Nutrition Lab



Library Facilities



Museum



Community Health Nursing Lab



Research Facility



Sports Facilities



Nursing Foundation Lab

EXPERIENCE HEALTHCARE BEYOND THE CLASSROOM

"JIGYASA" – The Curious Brain

The **JIGYASA Museum** at DMIHER inspires curiosity with preserved anatomical specimens, models, charts, and digital tools—offering students and researchers a rich understanding of human structure and function.



Anukruti: Skill to Heal

An Advanced Skills and Simulation Centre

The **SEL & SC** at DMIHER transforms healthcare education through Simulation and Virtual Learning. Its advanced center bridges theory and practice, helping students develop clinical skills, confidence, and readiness for real-world medical challenges.



Clinical Infrastructure

Shalinitai Meghe Super-Speciality Hospital, Wardha is a state-of-the-art facility offering world-class patient care and clinical infrastructure. It provides hands-on exposure across various advanced medical disciplines. With comprehensive services, it ensures real-world clinical experience for students.



Standardised Patient Program (SPP)

Shalinitai Meghe College of Nursing offers international programs like the Standardized Patient Program with Mayo Clinic, USA, helping students practice clinical and communication skills through real-life scenarios in a safe, controlled environment.



Objective Structured Clinical Examination (OSCE) Lab

A specialized facility to evaluate and improve clinical skills in a structured setting. It allows students to practice and demonstrate competence, ensuring readiness for real-world patient care.



PHOTO GALLERY



PROGRAM OFFERED

Bachelor of Science in Nursing (B.Sc. Nursing)

Intake Capacity : 100 students.

Duration : 4-year degree course / 8 Semesters

ELIGIBILITY CRITERIA

- » A pass in any of the following examinations –
The minimum age for admission is 17 years as of 31st December of the year of admission.
- » Candidates must have completed 10+2 (Higher Secondary) with Science stream (Physics, Chemistry, and Biology) along with English as a compulsory subject.
- » The candidate must have secured at least 45% aggregate marks in PCB (Physics, Chemistry, Biology).
- » For SC/ST/OBC candidates, the minimum aggregate required is 40%.
- » The candidate must be medically fit to pursue the course.
- » **International Students:**
The entry qualification equivalency i.e. 12th Std. will be obtained by Association of Indian Universities, New Delhi. Institutions, SNRC and University will be responsible to ensure that the qualification & eligibility will be equivalent to what has been prescribed in Council.



OUR PROGRAM OFFERS

- » Integrated curriculum combining clinical training, theoretical knowledge, and hands-on experience in hospital and community settings.
- » High-fidelity skills laboratories, simulation-based learning, OSCE training, and web-based tools for modern nursing education.
- » Emphasis on soft skills, leadership, ethics, and international career opportunities through scholarships and placement support.

PLACEMENTS

DMIHER students are getting placements opportunities across India as well as across the globe, our major recruiters are:



STUDENT TESTIMONIALS

» Tejas Dipak Kamble Batch 2023



B.Sc. Nursing Program SMCON

As a student of SMCON, I am proud to share my sincere appreciation for the outstanding educational journey I've had here. SMCON truly excels as a leader in nursing education, and my time within its walls has been genuinely transformative. The faculty at SMCON are exceptional mentors, offering unwavering support and guidance at every step. Their dedication to our growth and success is evident in every lecture, clinical session, and personal interaction. They not only impart valuable theoretical knowledge but also instill in us the core values of compassion, empathy, and integrity that define the nursing profession.

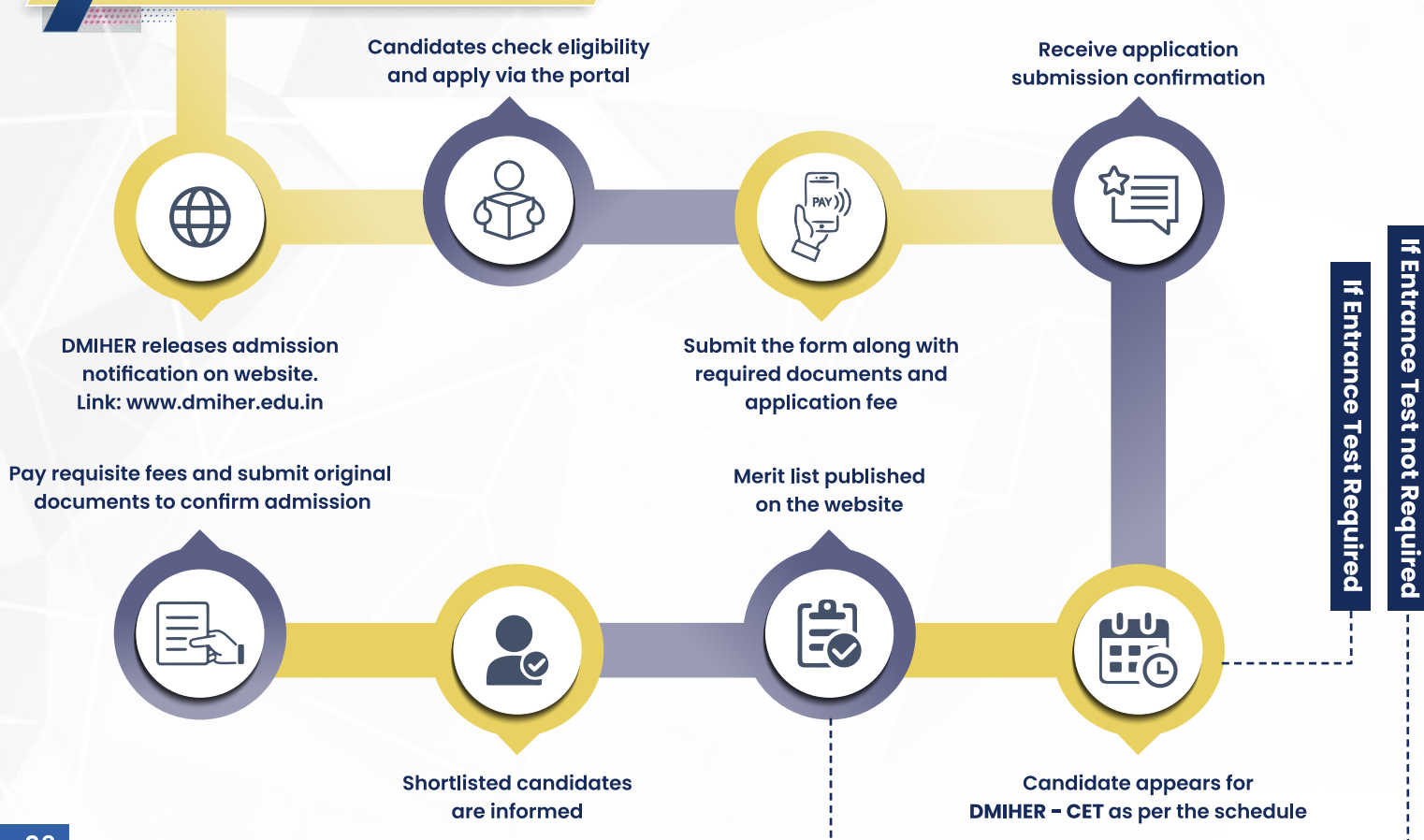
» Ms. Rasika Sunil Dhawad Batch 2023



B.Sc. Nursing Program SMCON

I am deeply grateful to Datta Meghe Institute of Higher Education and Research (DMIHER) for the invaluable experience I have gained at SMCON, which has had a lasting impact on both my personal and professional growth. SMCON stands as an outstanding institution for those aspiring to pursue a career in nursing. The faculty members at SMCON have been nothing short of exceptional, providing unwavering support and guidance throughout my journey.

ADMISSION FLOWCHART





DMIHER
LEARN. LEAD.

Scan to Apply !



CONTACT US:

Admission Cell



8888040999

Admission Counselor



7709898658

 **DMIHER, Main Campus, Sawangi (Meghe), Wardha 442001**



www.dmiher.edu.in